

PDC® Spas

TWILIGHT



LIFESTYLE SERIES

Model Specifications

5 Seats

76" Square x 31", 193cm Square x 79cm

275 Gallons, 1041 Liters

530 lbs, 241 kg. (dry)

2,370 lbs, 1,239 kg. (wet)

29 Reflections Stainless Jets™

(1) 4 BHP

Standard Features

Accent Digital Control

TemperLok™ & TemperBase™

Pristine Filtration™

Reflections Stainless Jets™

EverPure™ Ozone with EverLite™

MotionGlow Lighting™

Deluxe Thermal Cover

PDC Back-lit Logo

Acrylic Colors



Tuscan Sun



Midnight Canyon



Smokey Mountain



Silver Marble

*Standard



Storm Cloud

Cabinet Colors



Silverwood Gray



Midnight Graphite



Driftwood Brown





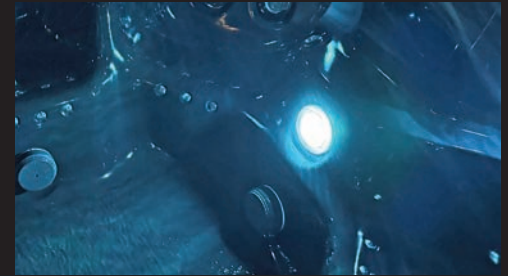
STANDARD FEATURES



Accent Control™ The Accent control™ center makes adjusting temperature, jets, and lighting easy and convenient.



Pristine Filtration™ The Pristine Filtration™ system keeps your spa clean, clear, and sparkling for a consistently refreshing soak every time.



MotionGlow™ Lighting This underwater lighting fills your spa with soft, soothing colors for a relaxing atmosphere at night.



EverPure™ Ozone w/EverLite™ EverPure™ ozone purifies water while EverLite™ confirms operation, keeping your spa consistently clean and fresh.



Reflections Stainless Jets™ These stainless steel jets adjust easily underwater, while interchangeable jet heads tailor soothing massage to sore muscles and personal hydrotherapy preferences.



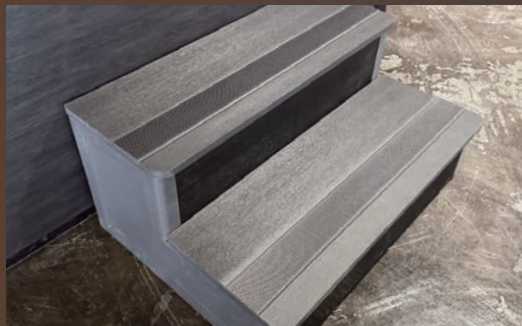
Locking Thermal Cover All LifeStyle Spas include a locking thermal cover, enhancing energy efficiency while providing added safety and peace of mind.



TemperLok™/TemperBase™ Cabinet Insulation with Back-lit PDC Logo & A PDC Spas exclusive TemperLok™ and TemperBase™ insulation maximize energy efficiency, that keeps heat in and operating costs low. Also, all cabinets now feature a back-lit PDC Spas logo.

Our spas are expertly engineered to deliver the powerful performance, design, comfort, and reliability you expect.

OPTIONAL FEATURES



Accent™ 2-Tier Composite Steps New for 2026, these step units feature removable color accent strips allowing you to seamlessly coordinate with Midnight Graphite or Driftwood Brown cabinet finishes. This flexible design perfectly compliments your backyard oasis. Available on all PDC Spa series.



WAVE™ Wireless Control WAVE™ wireless control lets you manage your spa through a smartphone app, adjusting spa functions anywhere in the world with a reliable wireless connection anytime.



Mirage - 3 Seats



Seasons - 5 Seats



Summit - 7 Seats



Twilight - 5 Seats

The LifeStyle Series offers a variety of models designed to fit every budget without sacrificing quality or comfort.